

### Functional Expense Report

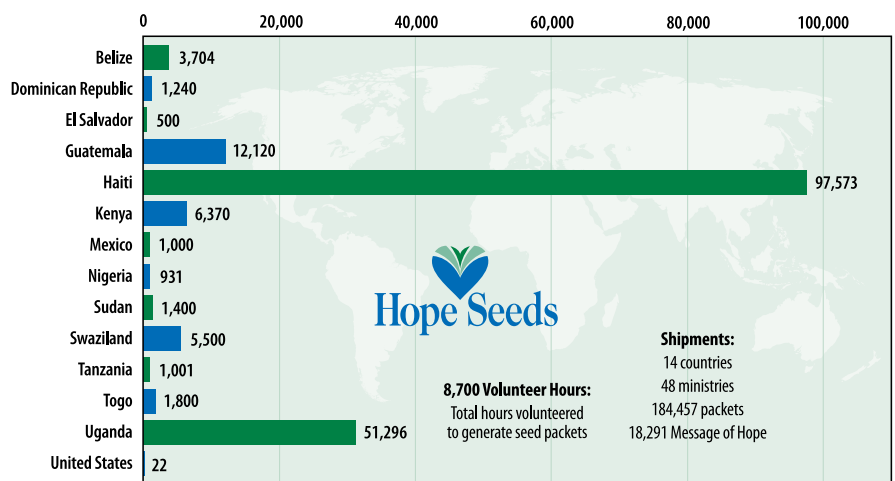
**Program Services** (Cash Donation + Gifts-in-Kind)  
International workers, shipping, education materials, seed and supplies, seminars and presentations

**Management Salary** – Staff payroll related to office work and administration

**Management Expenses** – Warehouse, office rent, depreciation, utilities, maintenance and services

**Fundraising** – Newsletter, pamphlets and postage

### Seed Distribution by Country – Total Packets Shipped



### Program Services Valuation Chart

- 184,457 Seed Packets** at \$2 per packet (\$367,000)
- + **48 Ministries** distributing the seed packets
- + **15 Seminars** held to educate and provide materials
- + **18,291 Message of Hope** Gospel tract shared

= **Value!!! Plant a Seed! Feed a Soul!**



Learn more

We invite you to learn more and discover how you can be a part of our mission, online at:

**HopeSeeds.org**